

Health Select Commission - Strategic Overview

20th June 2024

Ben Anderson

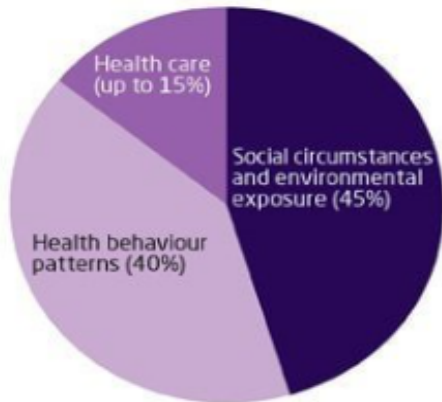
Director of Public Health and HSC Link Officer

Summary

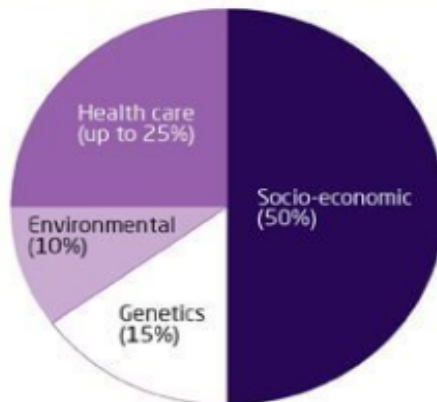
- The determinants of health
- Rotherham's Burden of Disease and Risks
- Prevention and Health Inequalities
- Integrated Care System Overview
- Key Strategies for Rotherham
- Key Resource Links

Health and the Determinants of Health

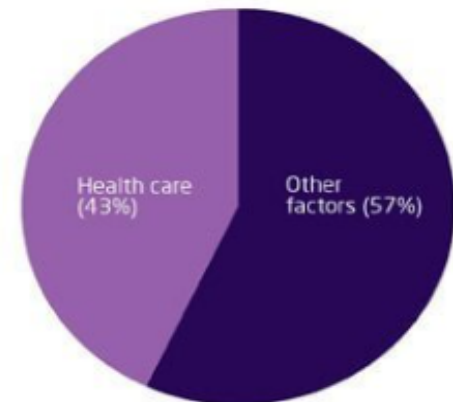
Mc Giniss et al (2002)



Canadian Institute of Advanced Research (2012)



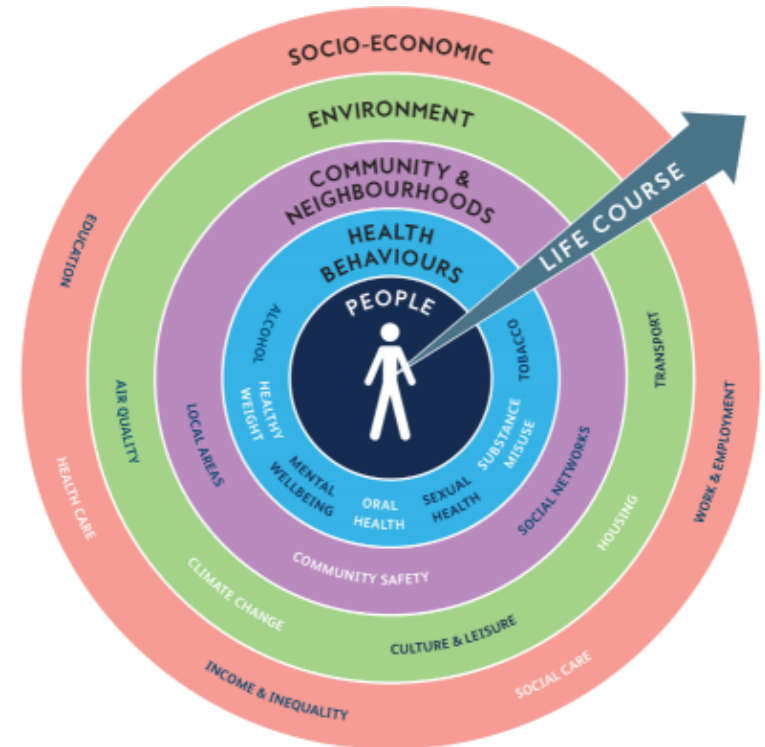
Bunker et al (1995)



- Health and Health outcomes are determined by a wide range of factors
- Healthcare estimated to contribute 15 – 43%, with individual genetics, health behaviours, socio-economic and environmental factors all having significant impacts
- Improving health is often about preventing and/or mitigating those impacts, as well as treating their results
- Rotherham JSNA - [Homepage – Rotherham Data Hub](#)

The wider determinants of health

- The wider determinants are the social, economic or environmental factors affecting health.
- These include:
 - Housing
 - Employment
 - Work environment
 - Transport
 - Education
 - Parks and green spaces
 - Social and community networks
- Evidence shows that socioeconomic and environmental determinants have a greater influence on health than the healthcare we receive.
- They also **impact** the healthcare that people receive and the ability for people to access healthcare.



Prevention pyramid

**Minimising
impacts
on quality of life
(QoL)**

**Management of long-term
conditions and reduced
escalation**

Early diagnosis and detection

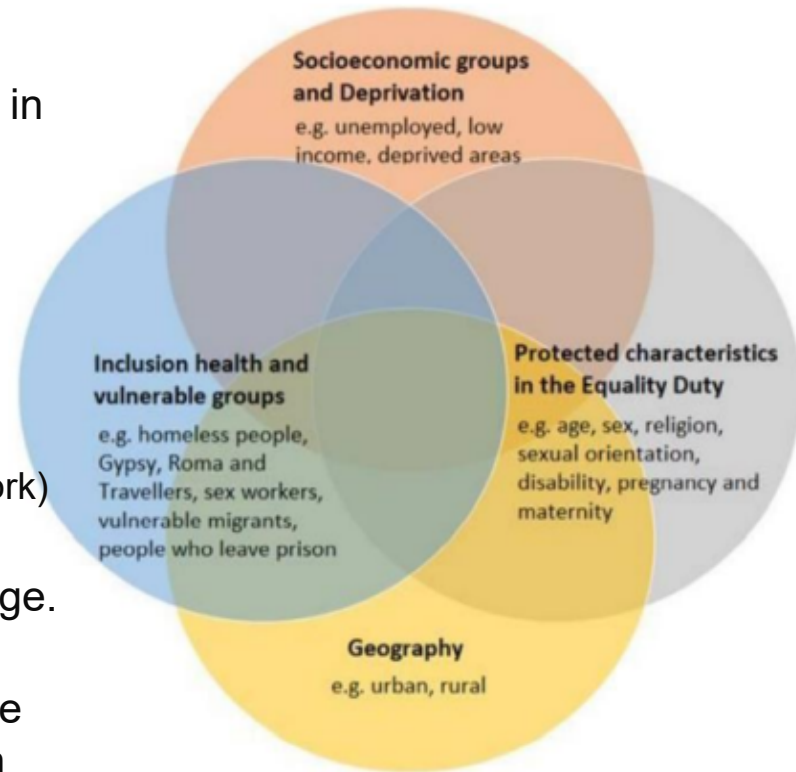
Individual support for risk factors

Systemic factors

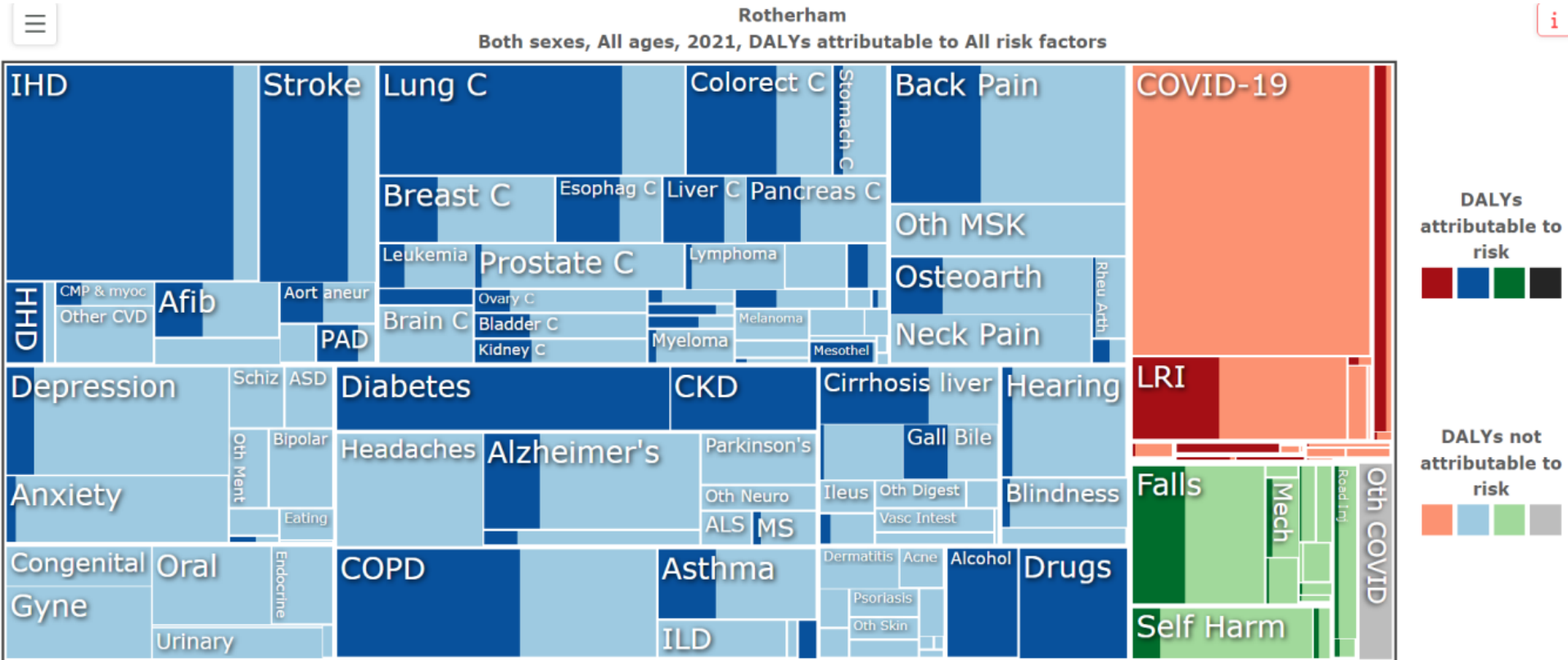
Prevention is about helping people stay healthy, happy and independent for as long as possible. There are opportunities for prevention at every stage – including after conditions have been diagnosed.

Health Inequalities

- Health inequalities are unfair and avoidable differences in health across the population, and between different groups within society.
- Health inequalities arise because of the conditions in which we are born, grow, live, work and age.
- Some of the factors that increase the risk of experiencing health inequalities include:
 - Socioeconomic deprivation
 - Protected characteristics
 - Geographical factors
 - Other vulnerabilities (e.g., homelessness, sex work)
- These different dimensions of health inequalities often intersect and can lead to multiple disadvantage.
- The Institute of Health Equity recently identified Rotherham as one of 14 Local Authority areas where the gap in Life Expectancy for women between the most deprived 10% neighbourhoods and the rest is growing (the gap is steady for men) - [instituteofhealthequity.org/home](https://www.instituteofhealthequity.org/home).

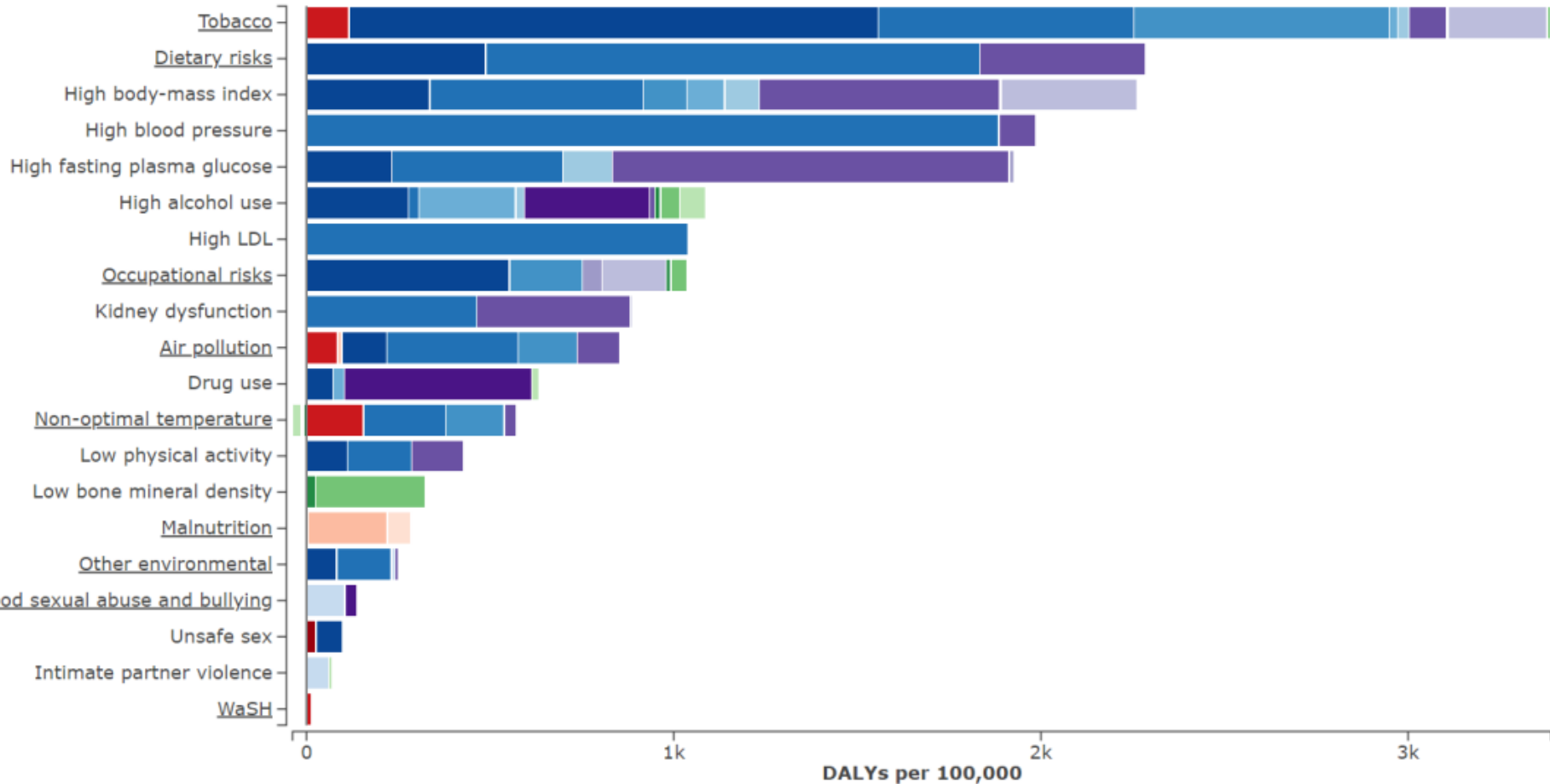


Global Burden of Disease Study

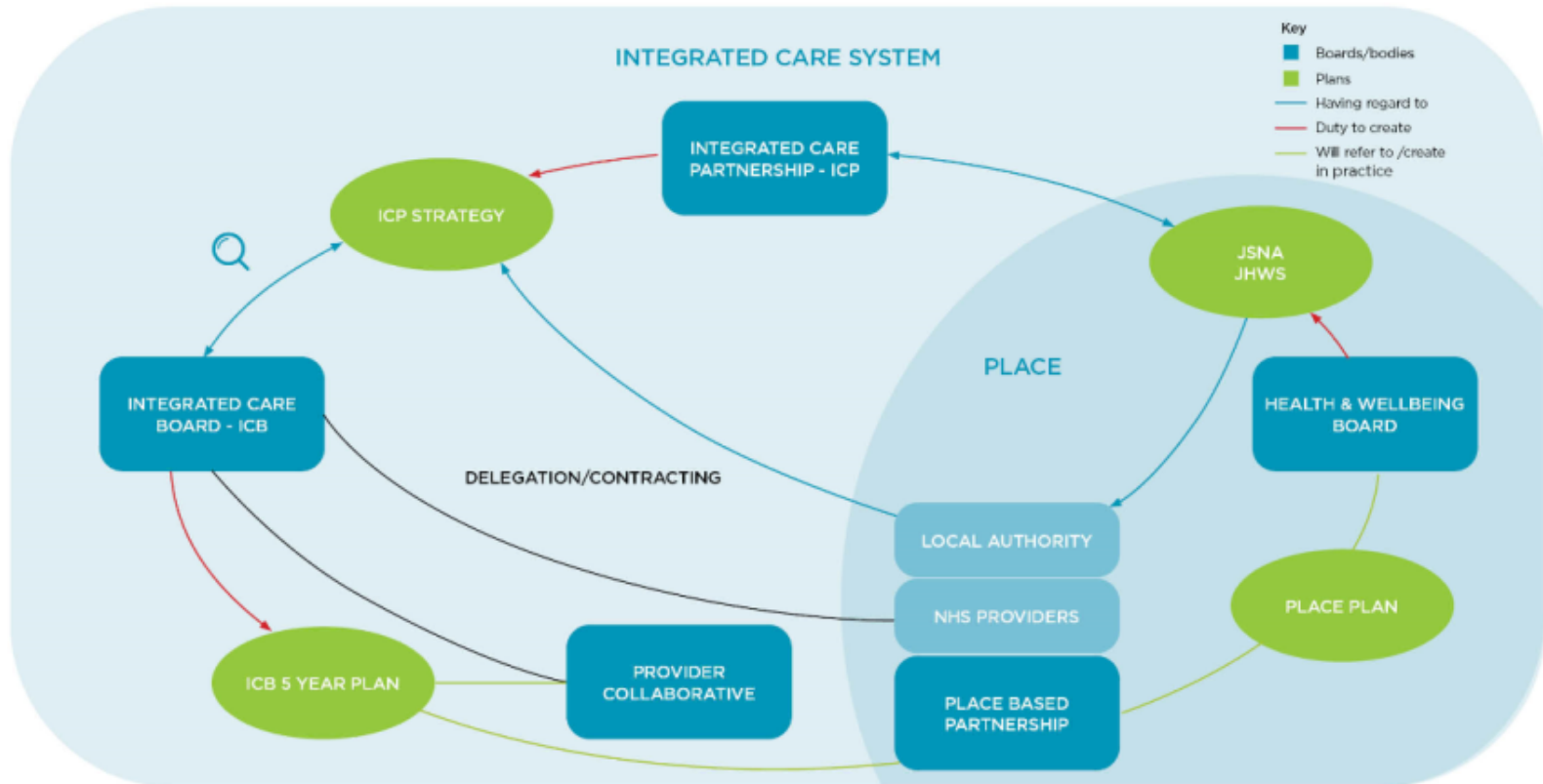


Global Burden of Disease Study

Rotherham, Both sexes, All ages, 2021



Health and Care System Overview



- Diagram describes key bodies within the Integrated Care System, their plans, and how these link together
- Core elements of the new ICS are the **Integrated Care Board** and **Integrated Care Partnership**
- These bodies will link into provider collaboratives and place

Rotherham Health and Wellbeing Strategy



Aim 1: All children get the best start in life and go on to achieve their potential.



Aim 2: All Rotherham people enjoy the best possible mental health and wellbeing and have a good quality of life.

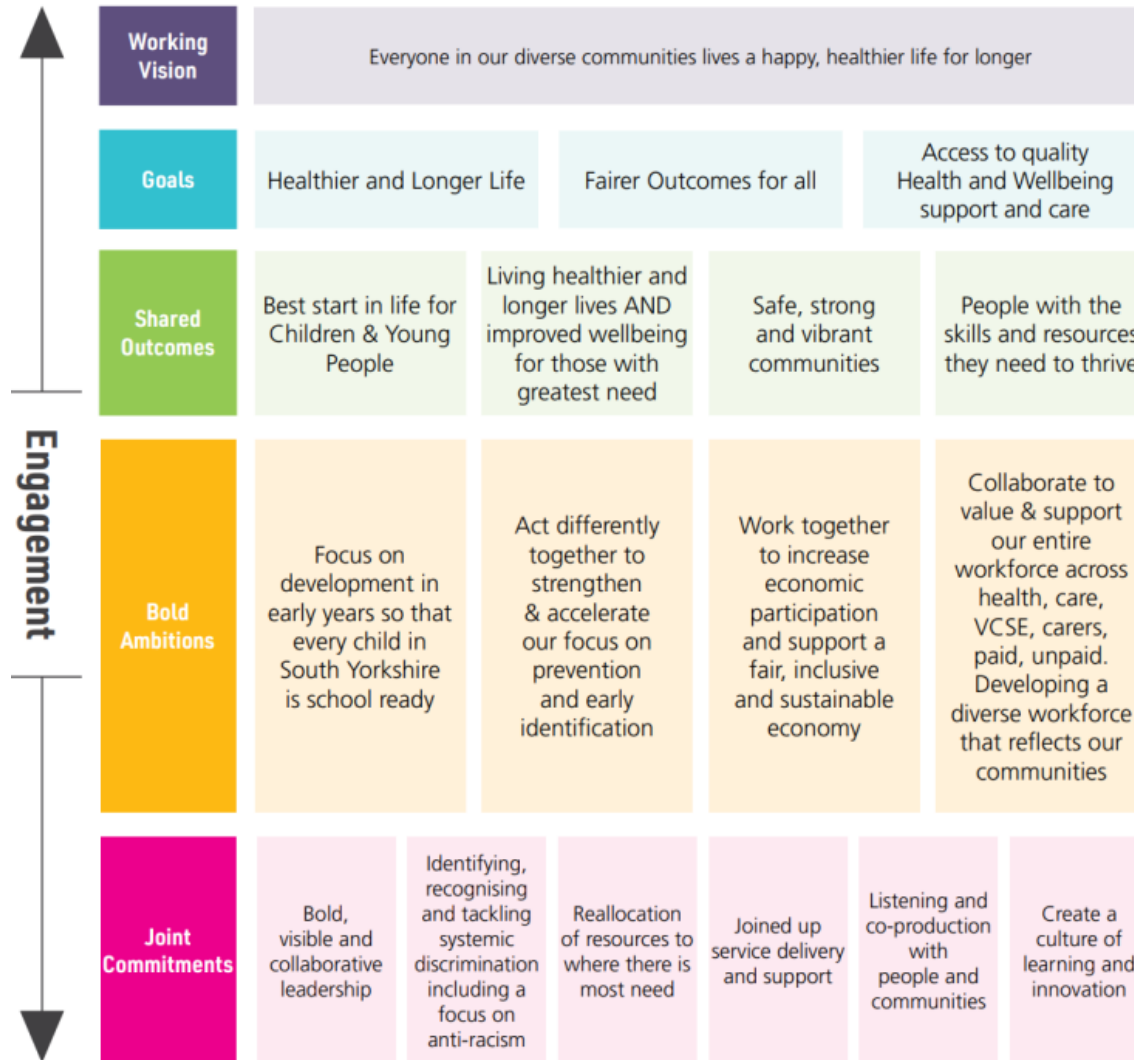


Aim 3: All Rotherham people live well for longer.



Aim 4: All Rotherham people live in healthy, safe and resilient communities.

SY ICP Strategy

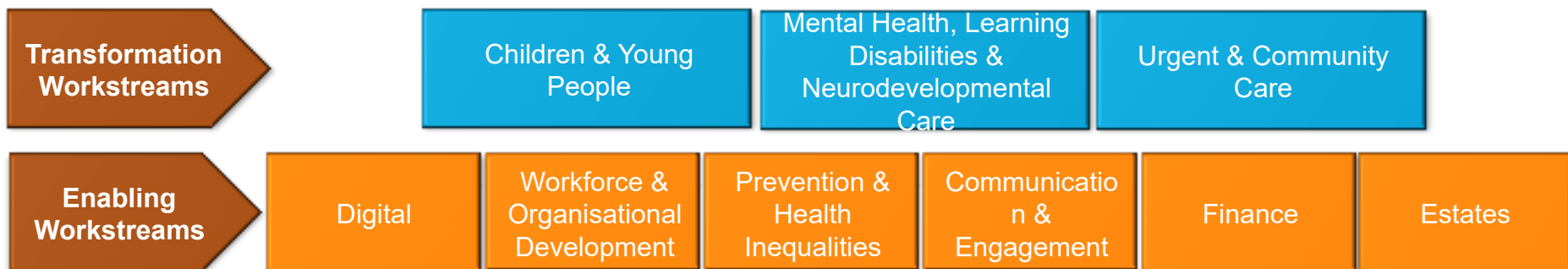


←
|
Enabling Plans
|
→

Our pathway to better health

Rotherham Place Plan

- Rotherham's 2020-22 **Place Plan** closely aligns to the **Health and Wellbeing Strategy** and is the delivery mechanism for the health and social care elements of the H&WB Strategy
- We identified **interlinked transformation workstreams** to maximise the value of our collective action
- The workstreams aim to **reduce demand for acute services, achieve clinical and financial sustainability** and thus close the three national gaps
- Transformation workstreams are supported by **six enabling workstreams**, all of which have their own key priorities
- Our approach ensures a **'Golden Thread'** from the **'Health and Well Being'** strategy through to **place delivery**



Rotherham Place Plan Transformation

Workstream	Priorities
Children & Young People	<ol style="list-style-type: none"> 1. The First 1001 days 2. Special Education Needs and Disabilities 3. Looked After Children 4. Children & Young People’s Mental Health and Emotional Wellbeing 5. Transition to Adulthood
Mental Health, Learning Disabilities & Neurodevelopmental Care	<ol style="list-style-type: none"> 1. Improving Access to Psychological Therapies service 2. Dementia diagnosis and post-diagnostic support 3. Adult Severe Mental Illnesses in the Community including perinatal mental health 4. Mental Health Crisis and Liaison 5. Suicide prevention 6. Better Mental Health for All, including loneliness 7. Improving residential, community and housing support for people with Mental Health and/or Learning disability 8. Delivering the NHS Long Term Plan for people with a learning disabilities and / or autism 9. Delivery of My Front Door transformation programme 10. Delivery of Autism Strategy and Neurological Pathway
Urgent & Community Care	<p>Workstream 1: Prevention and Urgent Response</p> <ol style="list-style-type: none"> 1. Front Door 2. Urgent Response Standards 3. Prevention and anticipatory care in localities: long term conditions and unplanned <p>Workstream 2:</p> <ol style="list-style-type: none"> 4. Integrating a sustainable discharge to assess model <p>Workstream 3:</p> <ol style="list-style-type: none"> 5. Enhanced Health in Care Homes



Rotherham Place Plan - Enablers

Workstream	Priorities
Digital	<ol style="list-style-type: none"> 1. Rotherham Health Record 2. Rotherham Health App 3. Population health management 4. Digital Literacy & Digital Inclusion
Workforce & Organisational Development	<ol style="list-style-type: none"> 1. Develop Place values and behaviours, and embed across the Place workforce 2. Develop a shared learning approach across the Place. 3. An applied approach to OD to develop the workforce working across partner organisations 4. Identify opportunities and teams to participate in the application of the applied OD approach 5. Ongoing support to transformational workstreams/priorities in relation to the Place workforce 6. Identify further opportunities for workforce/OD activities in line with associated networks/groups
Communications & Engagement	<ol style="list-style-type: none"> 1. Mental Health support and advice 2. System Recovery/Pressures 3. Enabling workstream transformation 4. ICS/ICP Future Developments
Prevention & Health Inequalities	<ol style="list-style-type: none"> 1. Develop prevention pathway to reduce harm from smoking, obesity, alcohol and support healthy ageing 2. Support the prevention and early diagnosis of chronic conditions (including mental health conditions) 3. Tackle clinical variation and promote equity of access and care for underserved groups 4. Harness partners' collective roles as anchor institutions to address health inequalities 5. Strengthen our understanding of health inequalities through data and intelligence 6. Advocate for prevention across the system

The Council Plan



RTP - Rotherham Plan

A place to be proud of

- Key town centre regeneration schemes, including Forge Island, the markets redevelopment and new central library, new homes and Riverside Gardens
- An inspiring programme of creative events and experiences, led by young people, culminating in Rotherham becoming the world's first Children's Capital of Culture in 2025
- Capital improvement schemes across Rotherham through the Towns and Villages Fund
- Our ambitious Levelling Up Fund projects at Wentworth Woodhouse, Magna and Rother Valley and Thrybergh country parks
- A series of public events and activities in communities across the borough

Inclusive economy

- An expansion of the higher-level skills offer at University Centre Rotherham and a curriculum that focuses on reusable and sustainable energy skills
- 'Skills Street' at Gulliver's Valley focusing on training, development and accreditation within the hospitality and leisure sectors
- Employment support programmes (Pathways and Inspire) that reduce barriers to work and help people to progress in their chosen careers
- Improved transport links to connect people to opportunities, including a new tram train stop at Magna
- Work with employers to ensure they have a local labour pool with the required skills and experience to help their businesses to grow
- Joint initiatives and commitments on social value and promotion of the Real Living Wage

Climate and environment

- The development of renewable energy projects
- Agree a partnership charter, with shared commitments to respond to the climate and nature crises
- Support for tree planting, rewilding, and other projects to promote nature recovery and biodiversity
- Reduced risk and impact of flooding in the borough, by investing in alleviation schemes

Health and wellbeing

- Transformation of community mental health services with patients and carers
- Opening of day facilities for people with learning disabilities, autism and complex needs
- Family hub approach to provide integrated support to families
- A strategic approach to increase physical activity across the borough, including investing in opportunities for active travel
- A prevention campaign to reduce the harms from smoking, obesity and alcohol and support healthy ageing
- A new diagnostic centre (respiratory physiology hub)

Building stronger communities

- A new multi-use development at Olive Lane (Waverley) acting as a vibrant centre at the heart of the community
- Annual Rotherham Show with a wide range of partners
- Support for voluntary and community sector to enable sustainable and resilient community-led local improvement
- Continue to invest in improving the borough's CCTV camera system.
- Tackling hate crime by engaging with communities and working with schools to increase take up of the Rotherham Youth Cabinet's 'Schools' Hate Incident Charter'.

Key Resources

- Rotherham Health and Wellbeing Strategy - [Health and Wellbeing Strategy – Health and Wellbeing Partners \(rotherhamhealthandwellbeing.org.uk\)](https://rotherhamhealthandwellbeing.org.uk)
- South Yorkshire ICP Strategy - [Integrated Care Partnership Strategy :: South Yorkshire I.C.S. \(syics.co.uk\)](https://syics.co.uk)
- Rotherham Place Plan - [Place Partnership – Healthy Rotherham \(yourhealthrotherham.co.uk\)](https://yourhealthrotherham.co.uk)
- Rotherham Council Plan - [Council Plan 2022-25 – Rotherham Metropolitan Borough Council](#)
- Rotherham Together Partnership Plan - [Homepage – Rotherham Together Partnership](#)
- Rotherham JSNA - [Homepage – Rotherham Data Hub](#)
- Rotherham Ward profiles - [Ward Profiles – Rotherham Metropolitan Borough Council](#)
- OHID Fingertips Tool Rotherham Public Health Profile - [Public health profiles - OHID \(phe.org.uk\)](https://phe.org.uk)